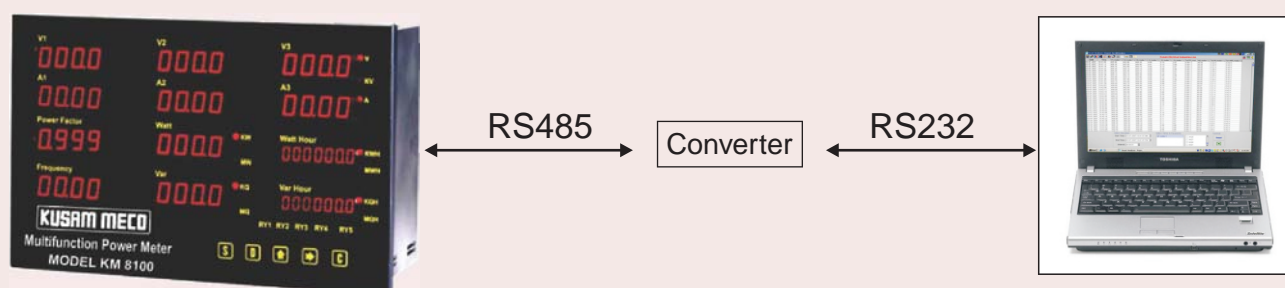


SYSTEM ANALYZER LOAD MANAGER SOFTWARE FOR POWER METER

"System Analyser " (Load Manager) is the most effective & Powerful Data Management Software available. It monitors all Power Parameters including Demand & Harmonics. The Software can monitor data from KUSAM - MECO Power Meters KM-KM-8100, KM-PM-7200, KM 6300, KM 9600 .

This software kit consists of CD, USB Hardware lock, RS 485 - RS 232 converter, one meter length communication cable. On installing the software using the CD, the PC will prompt the user for the "Hardware Lock". The hardware lock is to be connected to a USB port on the PC. After the RS 485 converter is connected to the meter & the PC, the communication is established.



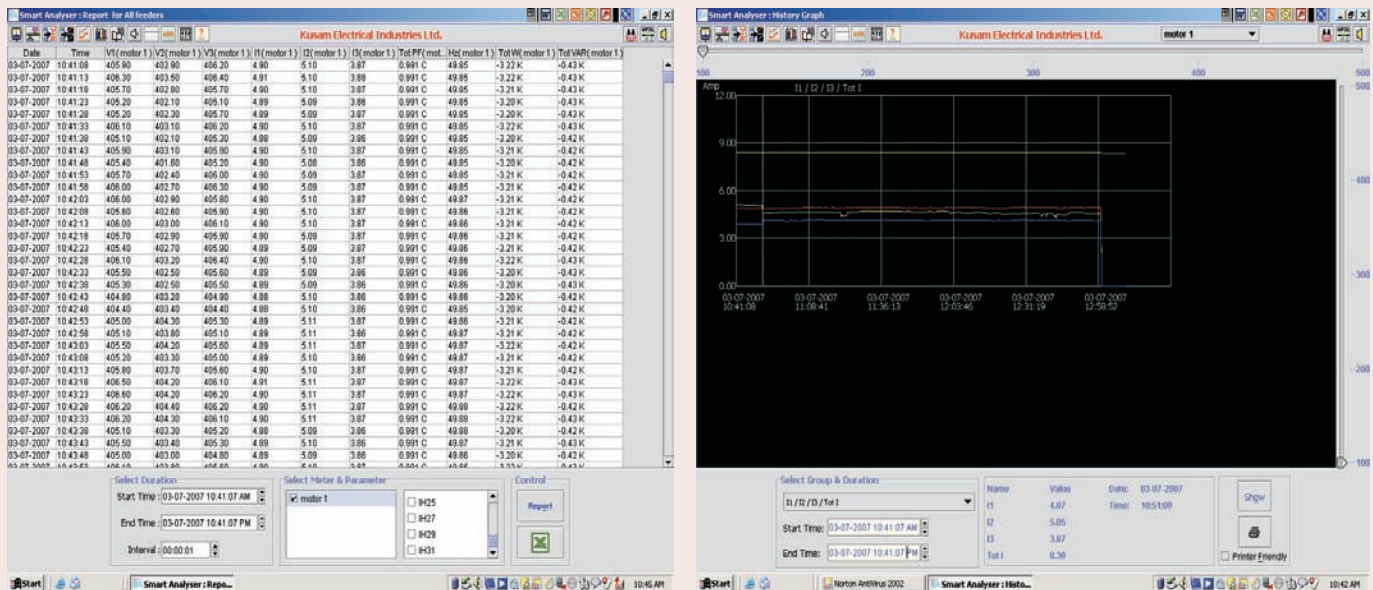
The data from the meter can be viewed on the PC in text as well as graphical form.

The different types of screens available in the software are :

1. Realtime values display of all parameters measured by the power meters.
2. RS 485 communication status of all meters connected. (256 Nos. meters can be connected for monitoring data which can increase by using repeaters) .
3. Real time graphical displays of all parameters with zoom facility.
4. Historical trend (graphical format) for all parameters
5. Alarm report and indication for exceeded alarmed parameters
6. Tariff (for cost checking energy bills)
7. KWH report in tabular format with total consumption for the selected period
8. Bar graph and pie chart for KWH report
9. Emailing alarmed parameters on exceeding alarm set limits
- 10 PC base Audio and Visual alarm indication
11. Backup, restore, delete facility for data
12. User selectable data logging interval.
13. Report Generation in Excel format of all stored data.

With help of the software we can :

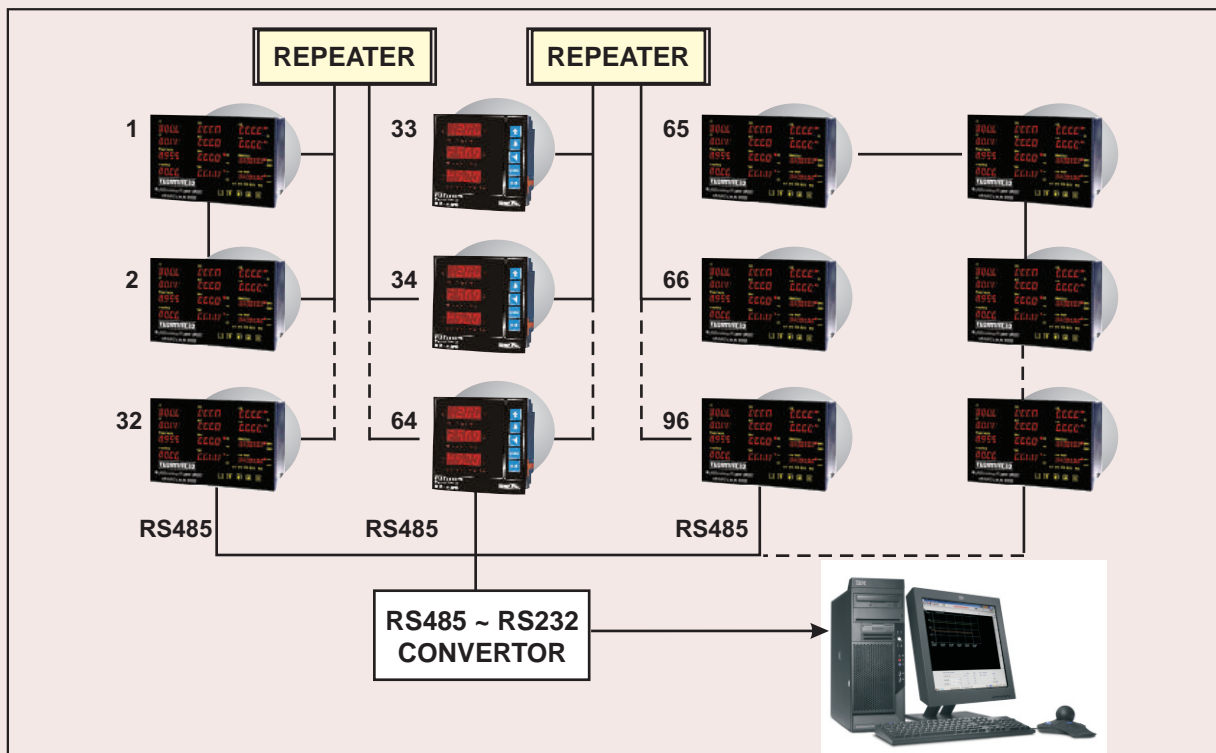
- Do comparison of all parameters through graphical representation
- Do statistical analysis of parameters (i.e.max. / min. / average demand of a day / month) .
- Generate report of present & previous data



The software can also be customised to display & generate report to suit one's requirement. e.g. Testing of Motors.

RS - 485 CONNECTION

RS - 485 communications allows multiple devices to be connected on the same bus. Up to 30 devices can be connected on a single RS - 485 bus, which consists of a shielded twisted pair cable. The overall length of the RS - 485 cable connecting all devices cannot exceed 4000 ft (1219m).



Connection Schematic of more than 32 Power Meters for monitoring.

MINIMUM SYSTEM REQUIREMENTS :

Pentium III & above Ram : Minimum 256 MB Hard Disk Capacity : 20 GB & above Serial Port : One USB Port : One Printer Port : One
CD ROM Drive : 24 X & above Windows Software 98 / 2000 / XP / Professional MS Office 98 & above

All specifications are subject to change without prior notice.